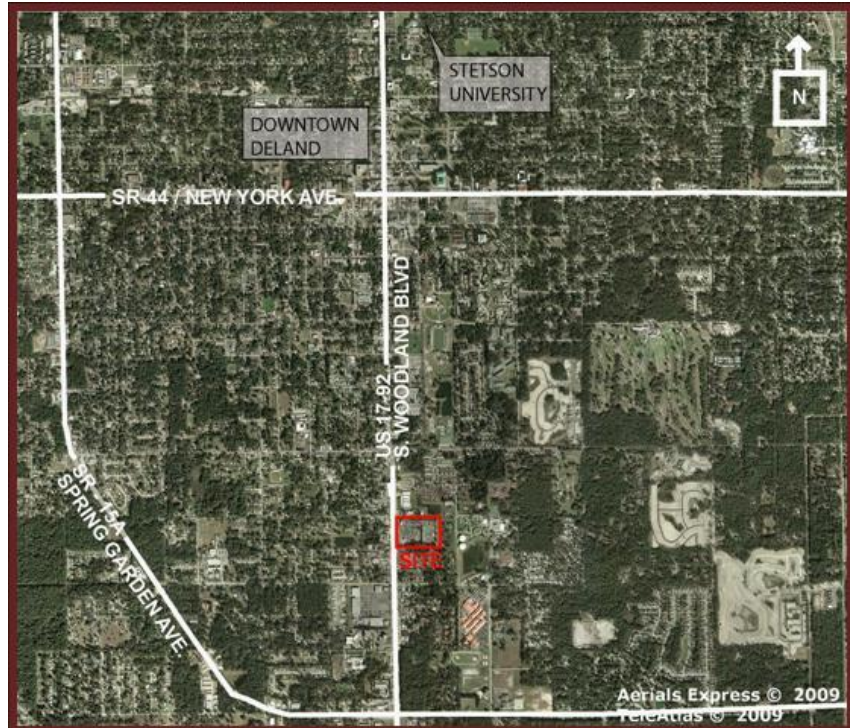


## Property Highlights

- Located less than 4 miles from I-4
- Redeveloped in 2004
- 7:1,000 sf to parking ratio
- 8,223 sf available
- \$12 psf NNN
- \$2.45 psf CAM

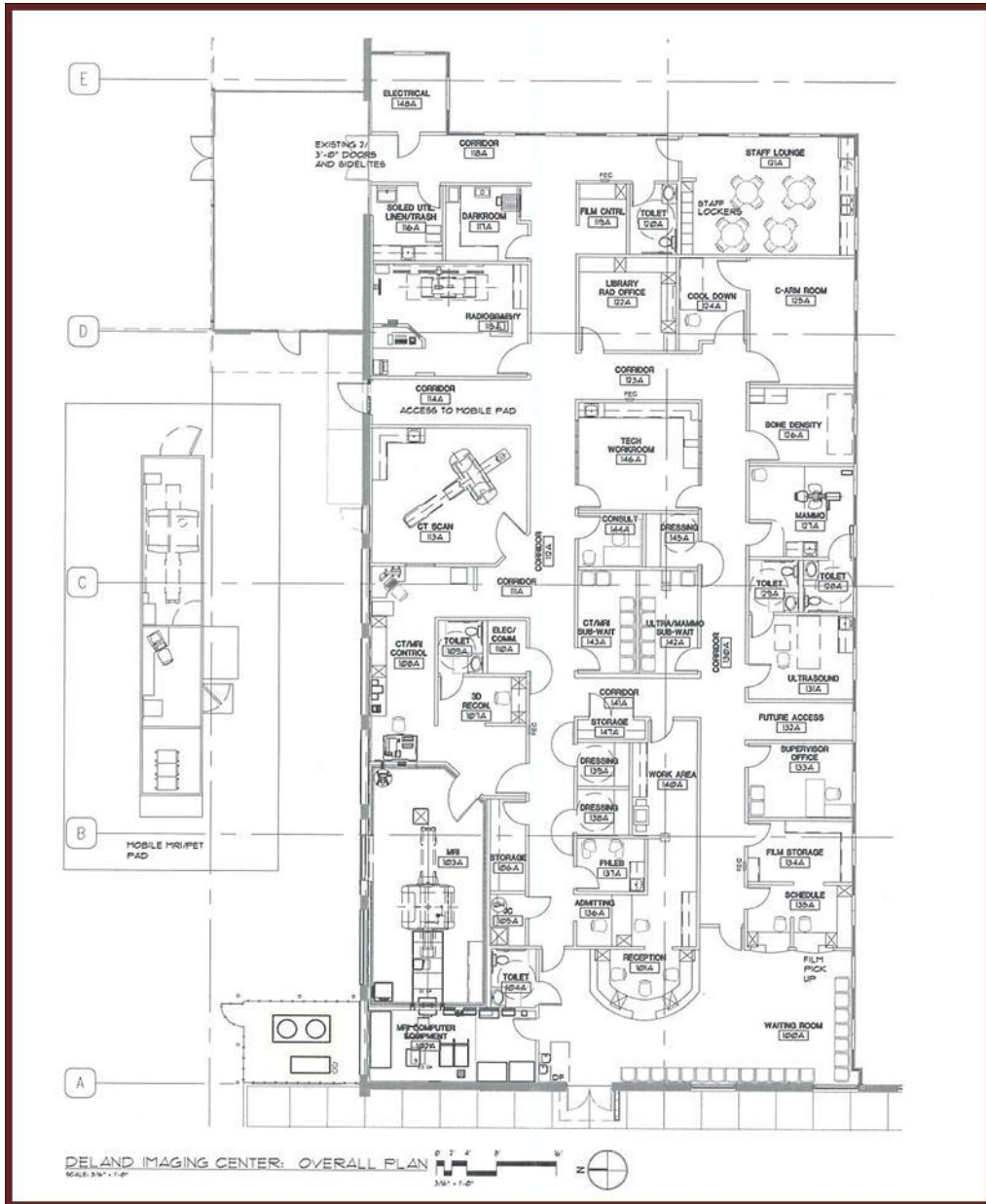


**Leasing Contacts:**  
**Katherine Rush**  
407.581.6224 Direct  
[krush@crossmanco.com](mailto:krush@crossmanco.com)  
Crossman & Company  
Licensed Real Estate Brokers

For a complete directory of our listings visit our website:  
[www.crossmanco.com](http://www.crossmanco.com)

No warranty expressed or implied has been made as to the accuracy of the information provided herein, no liability assumed for error or omissions

Floor Plan – 8,223 sf



**Leasing Contacts:**  
**Katherine Rush**  
 407.581.6224 Direct  
[krush@crossmanco.com](mailto:krush@crossmanco.com)  
 Crossman & Company  
 Licensed Real Estate Brokers

For a complete directory of our listings visit our website:  
[www.crossmanco.com](http://www.crossmanco.com)

No warranty expressed or implied has been made as to the accuracy of the information provided herein, no liability assumed for error or omissions